



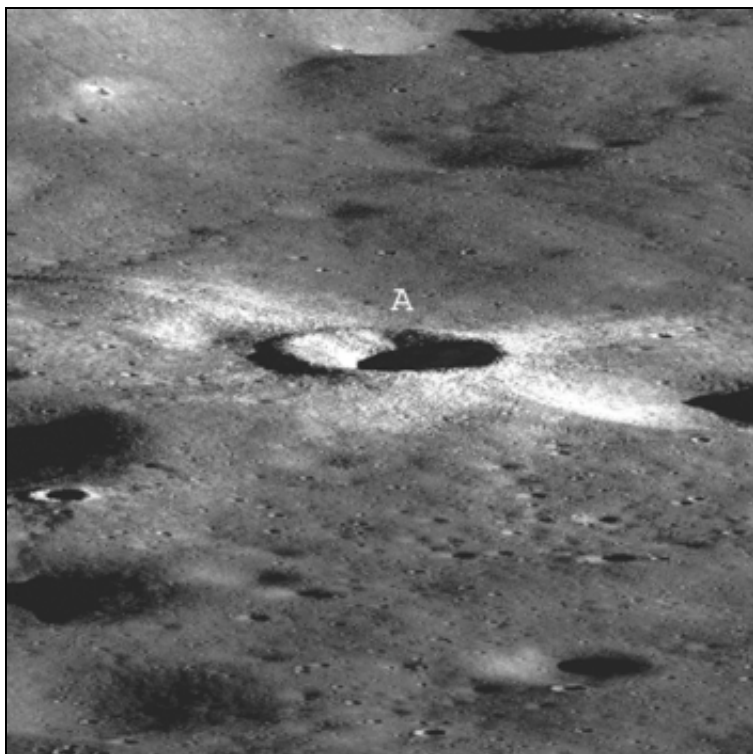
First LROC Stereo Results

LROC News System



Tuesday, August 25, 2009

First LROC Stereo Results



Synthetic perspective view looking south from the Apollo 16 landing area, topography is rendered naturally (no vertical exaggeration) [NASA/GSFC/Ohio State University].

- [:: Links ::](#) | [News System](#) | [Announcements](#) | [Featured Image](#) | [Operations Journal](#) | [RSS Feed](#) | [LROC Homepag](#)

LROC has the ability to acquire stereo views by imaging a target from two separate orbits at different viewing angles. Typically stereo pairs are acquired from adjacent orbits to minimize changes in lighting conditions. Computer methods allow very accurate measurements of [parallax](#) between features of the two images, from which topographic maps are made. Such maps are termed digital elevation models, commonly called DEMs.

Quicksearch

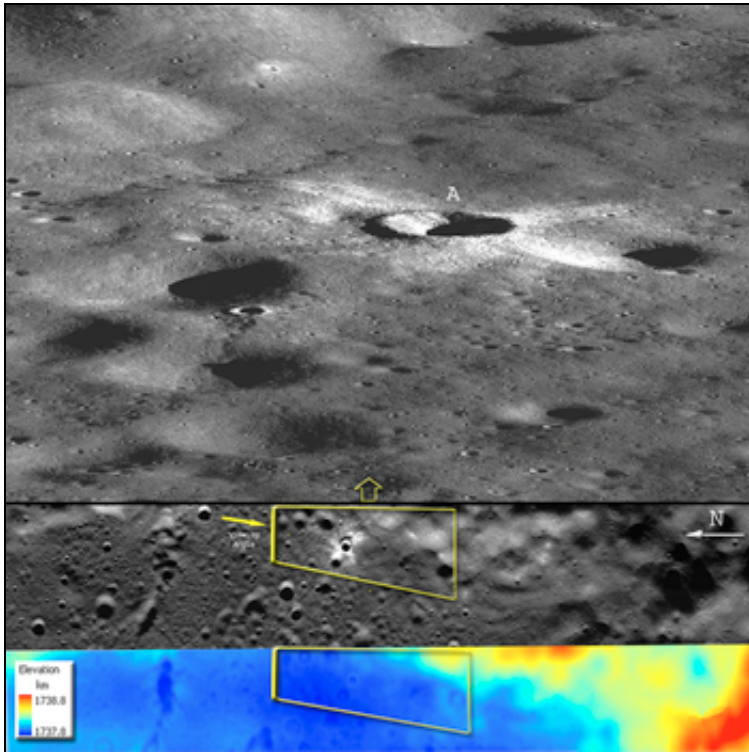
Calendar

September '09						
Mon	Tue	Wed	Thu	Fri	Sat	Sun
	1	2	3	4	5	6
7	8	9	10	11	12	13
14	15	16	17	18	19	20
21	22	23	24	25	26	27
28	29	30				

Categories

- XML [LROC](#)
- XML [Announcements](#)
- XML [Featured Image](#)
- XML [Operations Journal](#)

[All categories](#)



Perspective view, LROC image, and DEM [NASA/GSFC/Ohio State University].

The area covered by this stereo pair shows the topography seen by the Apollo 16 astronauts, including rolling plains with many impact craters. The 3-D DEM is colored showing elevations, ranging over about 1-kilometer. South Ray crater (A) in the perspective view is 750 meters in diameter and approximately 70 meters deep. The surrounding craters range from several meters in diameter to 1,200 meters. The tallest mountain in the southwest corner (lower right) of the DEM is 880 meters above the plain.

The DEM area [NAC images M102064759 and M102057602; centered at 9° S, 15.4° E] is 50 km long and 7 km wide. The LROC images were taken on July 12, 2009 during LRO orbit 218, near the Apollo 16 landing site. Images were processed using software developed by the [Mapping and GIS Laboratory](#) at the Ohio State University.

Posted by [Mark Robinson](#) in [Featured Image](#) at [18:03](#)